

SHARING THE GREEN TECHNOLOGY

Patents ZL 2017 1 0380803.8  
ZL 2019 2 0259196.4



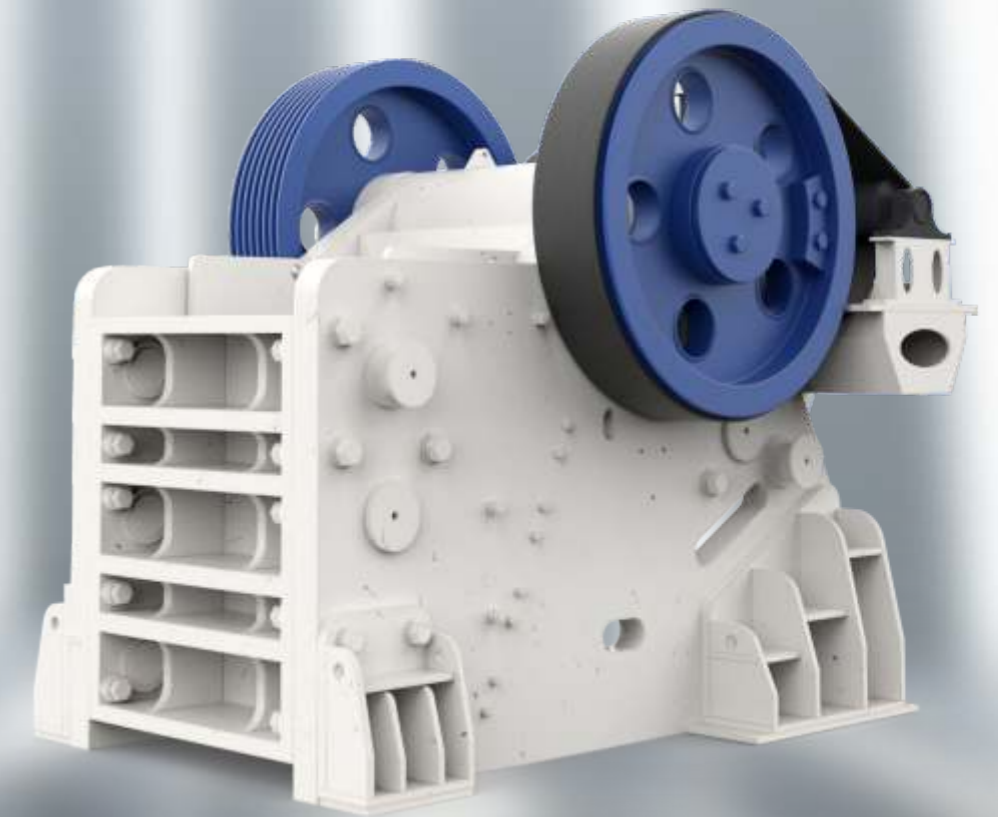
Patented Products



International  
Quality System  
Certification



CE certification



郑州洁普智能环保技术有限公司  
ZHENGZHOU GEP ECOTECH CO., LTD

T:+86-371-56177311 F:+86-371-56177322

Email: sales@gepecotech.com

中文官网 : www.gephb.com  
英文官网 : www.gepecotech.com

中国-郑州-高新区长椿路23号  
No.23 Changchun Road, High-tech zone, Zhengzhou, China

**GEC Series Jaw  
Crusher**



# Contents

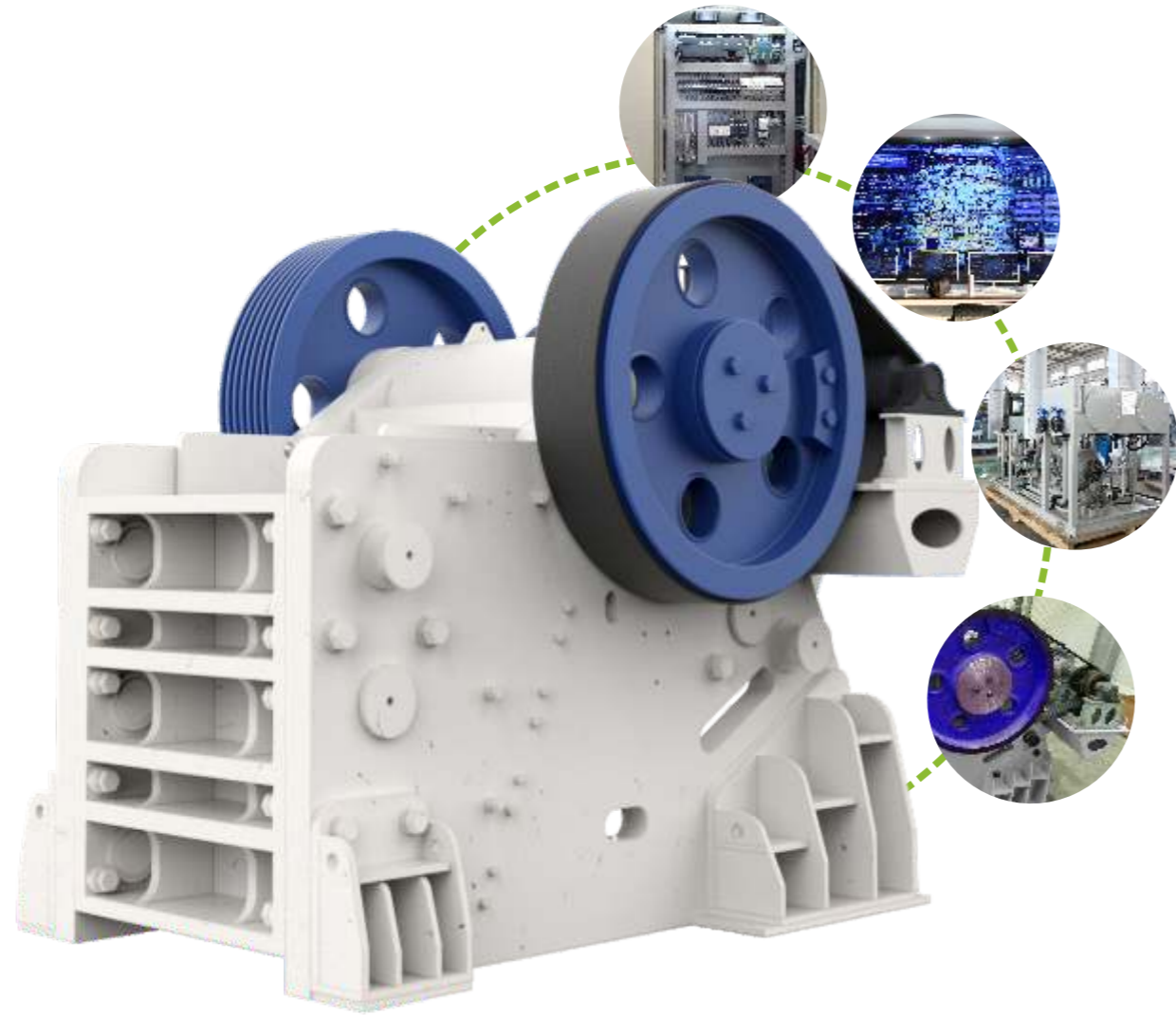
- 01 / 02 ● R & D Background
- 03 / 06 ● Product Highlights
- 07 / 08 ● Technical Parameters
- 09 / 10 ● National Patent, Software Copyright
- 11 / 12 ● Digital GEP Ecotech
- 13 / 14 ● Worry-free Service, Service Sectors
- 15 / 16 ● Products Family

## GEC Series Jaw Crusher



## R & D BACKGROUND

The annual output of urban construction waste in China has exceeded 3 billion tons, and is increasing year by year. These misplaced golden resources are mostly arbitrarily landfilled or piled up, causing serious pollution problems. Construction waste contains a large amount of concrete, stone, brick and tile, asphalt and other materials of medium to high hardness, which require a jaw crusher with high crushing power for the initial crushing. The GEC series jaw crusher has disadvantage of large crushing ratio, high bearing capacity and strong wear resistance; symmetrical V-shaped structure, larger capacity; mature technology and long-lasting test.

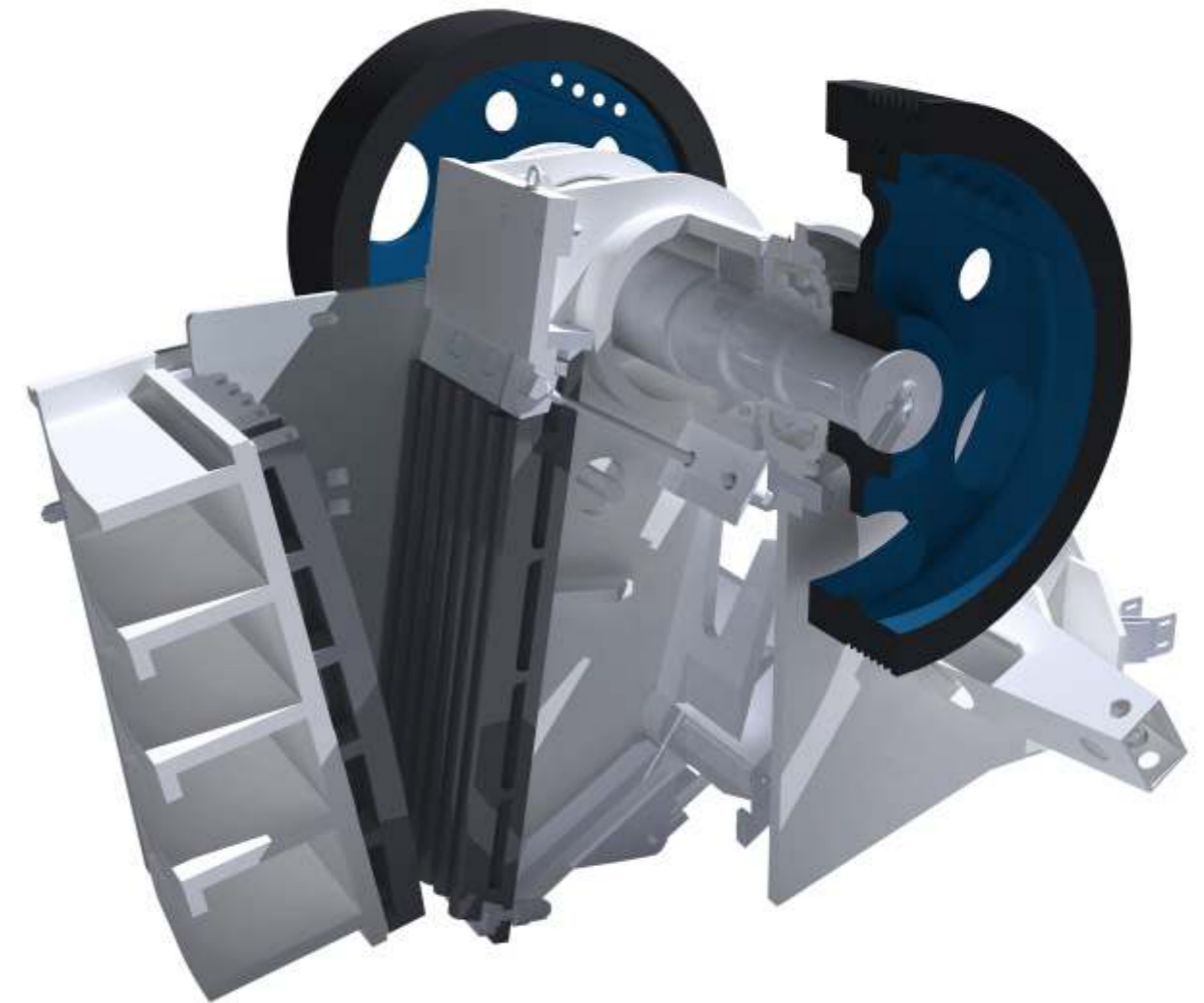


### »» Equipment composition

Frame part, eccentric shaft rotation part, crushing chamber working part, safety device, discharge opening adjustment device, GI intelligent monitoring system (optional), intelligent dust reduction monitoring system (optional)

### »» Working principle

The electric motor drives the pulley through the belt, and then drives the eccentric shaft through the pulley to make the moving jaw swing back and forth and up and down, and when the movable jaw pushes the movable jaw plate to the fixed jaw plate, the material is crushed or split. When the movable jaw and the movable jaw plate are backed up by the eccentric shaft and the spring, the material previously crushed or split is discharged from the lower discharge port of the jaw plate.



# Product Highlights



01/

## » V shape crushing cavity

- The crushing cavity adopts symmetrical V-shaped structure, the actual width of the feed opening is the same as the nominal width of the feed opening, increasing the crushing capacity.



02/

## » Assembled frame structure

- The use of assembled, modular, non-welded frame structure, which is more convenient for installation, transportation, fatigue strength, with high reliability.



03/

» **Low stress welding method**

- Adopt large arc transition fillet welding method to reduce stress concentration, ensure equal strength and uniform force in all directions of the frame, and stronger impact resistance.



04/

» **Heavy movable jaw assembly**

- The heavy-duty jaw assembly adopts forged heavy-duty eccentric shaft, high-quality heavy-duty rolling bearings, and finite element software-optimized jaw body, giving the equipment high impact resistance and high stability.



05/

» **Centralized lubrication system**

- Centralized lubrication system to reduce the difficulty of maintenance; labyrinth seal to ensure the internal lubricating grease of the bearings is clean and improve the service life of the bearings.



06/

» **Hydraulic adjustment device**

- The use of double wedge or hydraulic discharge adjustment device which is more simple and faster than the shim adjustment operation, shortened the downtime.



07/

» **Integrated motor mounting**

- The motor base and frame are installed in one piece, saved installation space and reduced the length of the v-belt, and because of the synchronous movement of the frame, motor base and motor, the adjustable motor base realizes the adjustment of the v-belt tension, thus extending the service life of the v-belt.



08/

» **Rubber shock absorbing device**

- Fixed with rubber vibration damping device, which effectively absorbs the peak vibration of the equipment, while allowing the displacement of the equipment in vertical and horizontal directions, thus reducing the impact on the foundation.



# Technical Parameters

| Model  | Feed Opening (mm) | Max Feeding Size (mm) | Discharge Range (mm) | Capacity (t/h) | Motor Power (kW) | Weight (Kg) |
|--------|-------------------|-----------------------|----------------------|----------------|------------------|-------------|
| GEC231 | 510x800           | 425                   | 40-150               | 50-250         | 55-75            | 8900        |
| GEC340 | 600x1020          | 500                   | 60-175               | 85-300         | 75-90            | 15600       |
| GEC440 | 760x1020          | 585                   | 70-200               | 120-520        | 90-110           | 23200       |
| GEC443 | 850x1100          | 680                   | 90-215               | 160-570        | 110-132          | 33700       |
| GEC549 | 950x1250          | 800                   | 100-250              | 260-810        | 132-160          | 49300       |
| GEC555 | 1070x1400         | 900                   | 125-250              | 360-920        | 160-200          | 56500       |
| GEC649 | 1100x1250         | 900                   | 150-280              | 385-920        | 160-200          | 52800       |
| GEC659 | 1200x1500         | 960                   | 150-350              | 400-1000       | 200-250          | 90300       |
| GEC663 | 1200x1600         | 1000                  | 150-350              | 500-1250       | 220-250          | 91300       |
| GEC771 | 1500x1800         | 1250                  | 150-350              | 600-1500       | 315-400          | 122000      |
| GEC983 | 1800x2100         | 1500                  | 175-350              | 700-1800       | 355-450          | 180000      |

SHARING THE  
| GREEN TECHNOLOGY |  
共享绿色科技



## NATIONAL PATENT



|                                       |                                |
|---------------------------------------|--------------------------------|
| Jaw crusher                           | Patent No.:ZL 2017 1 0380803.8 |
| A kind of crusher control system      | Patent No.:ZL 2019 2 0259196.4 |
| Negative pressure dust removal device | Patent No.:ZL 2019 2 0259196.4 |

## SOFTWARE COPYRIGHT



|  |                                    |
|--|------------------------------------|
| Crusher operation self-diagnosis system                | Registration number: 2019SR0071856 |
| Crusher O&M monitoring systems                         | Registration number: 2019SR0067379 |
| Crusher intelligent monitoring system                  | Registration number: 2019SR0072287 |
| Intelligent monitoring system for waste crushing line  | Registration number: 2019SR0072410 |
| Crushing production line intelligent monitoring system | Registration number: 2019SR0053414 |
| Intelligent dust reduction system for waste crushing   | Registration number: 2019SR0053423 |
| Intelligent dust reduction system for mining crusher   | Registration number: 2018SR1078342 |

**INTELLIGENT SOLID WASTE DISPOSAL SOLUTION  
PROVIDER AND EQUIPMENT MANUFACTURER**



Equipment manufacturing base



## DIGITAL GEP ECOTECH

2007

35000

Founded in 2007, GEP Group has taken resource recycling as our mission and is committed to the research and development, production, sales and service of intelligent solid waste shredding equipment and its supplementary equipment, as well as providing professional and customized system solutions for solid waste production lines. With more than ten years of experience, GEP has covered dozens of countries and regions around the world, and has become a major force in the solid waste field.

Located in the Yuan Yang County Industrial Cluster, the high-efficiency intelligent environmental protection equipment manufacturing base has a total investment of 500 million yuan, covering a total area of 100 mu, with a total construction area of 35,000 square meters, an annual output of 400 sets of high-efficiency intelligent environmental protection equipment, and an annual output value of more than 500 million. With CNC wire-cut machine tools, CNC lathes, vertical machining centres, CNC gantry machining centres and more than 100 sets of precision processing equipment.

100+

8

The company has now been awarded as a high-tech enterprise, AAA grade credit rating enterprise, provincial and municipal solid waste resource recycling equipment engineering technology research centre and other corporate awards, has obtained 75 national patents and 15 software copyrights, and has successfully passed the ISO three system certification (quality, environment and occupational health) and the CE certification.

GEP ECOTECH is deeply committed to the 8 major fields of bulky waste disposal, biomass fuel pre-shredding, food waste comprehensive disposal, industrial waste comprehensive disposal, waste tire recycling disposal, hazardous waste shredding, domestic waste shredding and sorting, construction & decoration waste disposal, with rich experience, excellent equipment and services.



## WORRY-FREE SERVICE

### Our commitment

The service we supply is more than the products you buy  
When you buy a product, you are buying a service that covers the entire life cycle of the product.

30

A response to technical enquiries  
within 30 minutes

24

Engineer dispatch  
within 24 hours

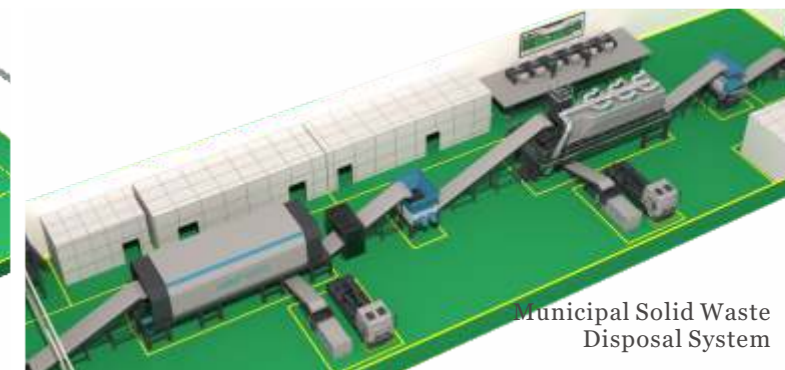
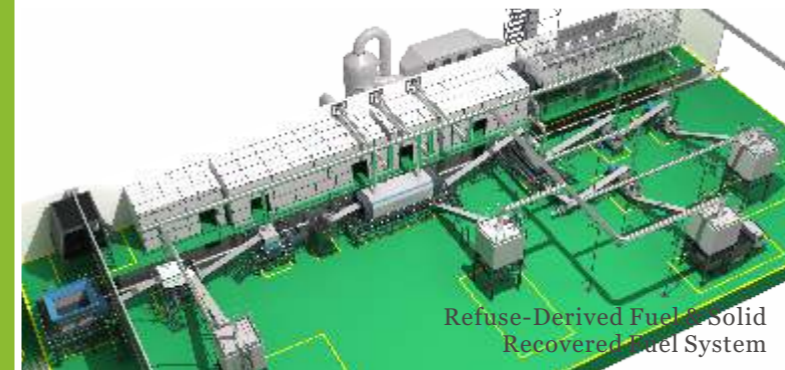
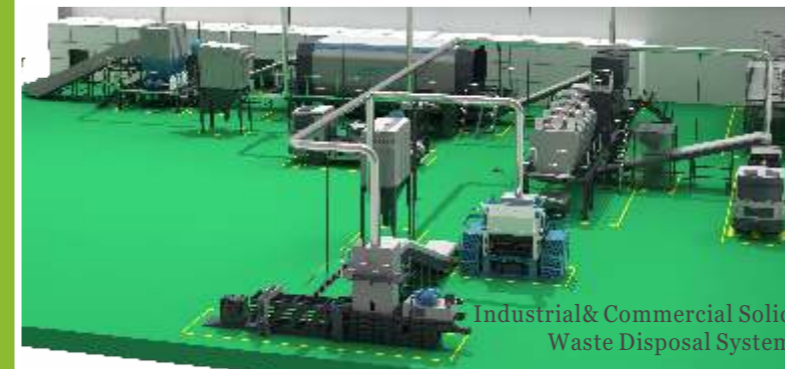
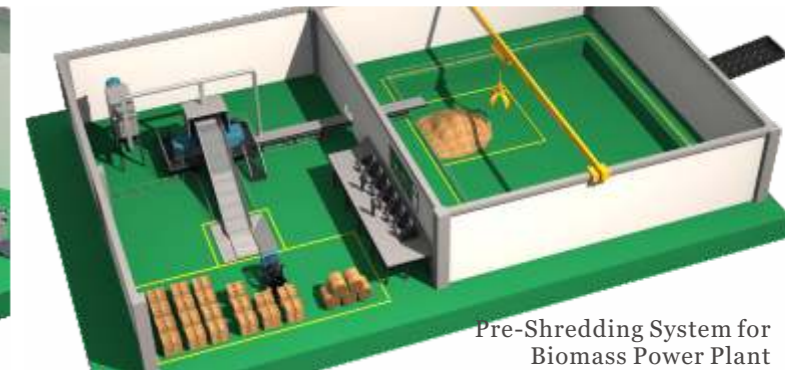
12

Free repair within 12 months  
of delivery

365

365 days a year for  
service requests

## SERVICE SECTORS





GDL Bulky Waste Shredder



GDF Food Waste Shredder



GDI Industrial Waste Shredder



GDT Tyre Shredder



GC Pre-shredder



GF Four Shaft Shredder



GSX Flat Push Single Shaft Fine Shredder



GSS European Single Shaft Fine Shredder



GDB Biomass Shredder

INTELLIGENT SOLID WASTE DISPOSAL SOLUTION  
PROVIDER AND EQUIPMENT MANUFACTURER



GSD Double Shaft Fine Shredder



GEC Jaw Crusher



GEF Impact Crusher



GEV Vertical Shaft Impact Crusher



GPW Tyre Solid Waste Mobile Shredding Plant



GPC Crawler Solid Waste Mobile Shredding Plant



Flip-flow Screen Gesc Series



Rotary Drum Screen Gts Series



Wind Sifter Gfx Series