

SHARING THE GREEN TECHNOLOGY



郑州洁普智能环保技术有限公司  
ZHENGZHOU GEP ECOTECH CO., LTD

T: +86-371-56177311 F: +86-371-56177322

Email: sales@gepecotech.com

中文官网: www.gephb.com  
英文官网: www.gepecotech.com

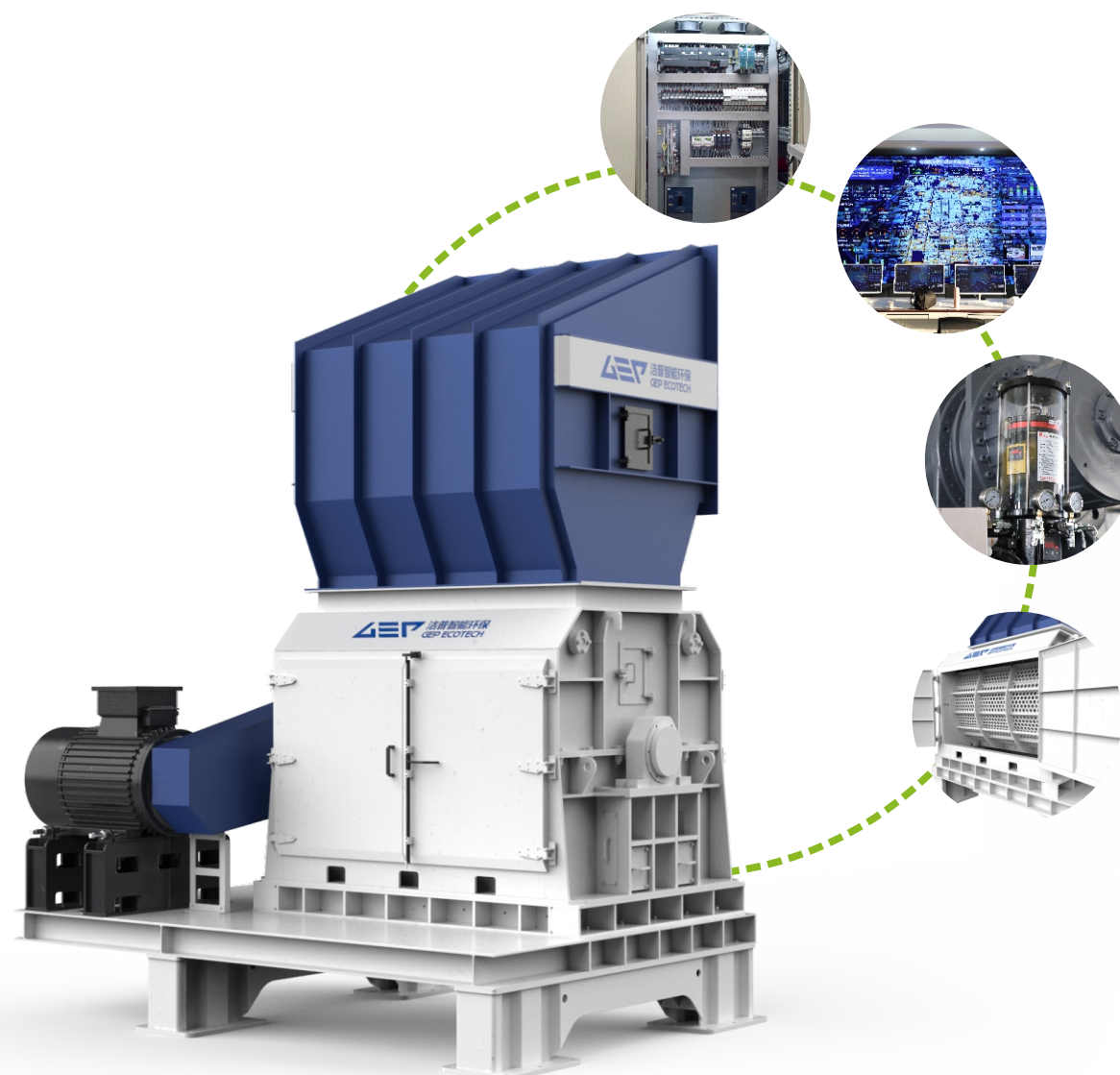
中国-郑州-高新区长椿路23号  
No.23 Changchun Road, High-tech zone, Zhengzhou, China

## GXB Series Biomass Fine Shredder



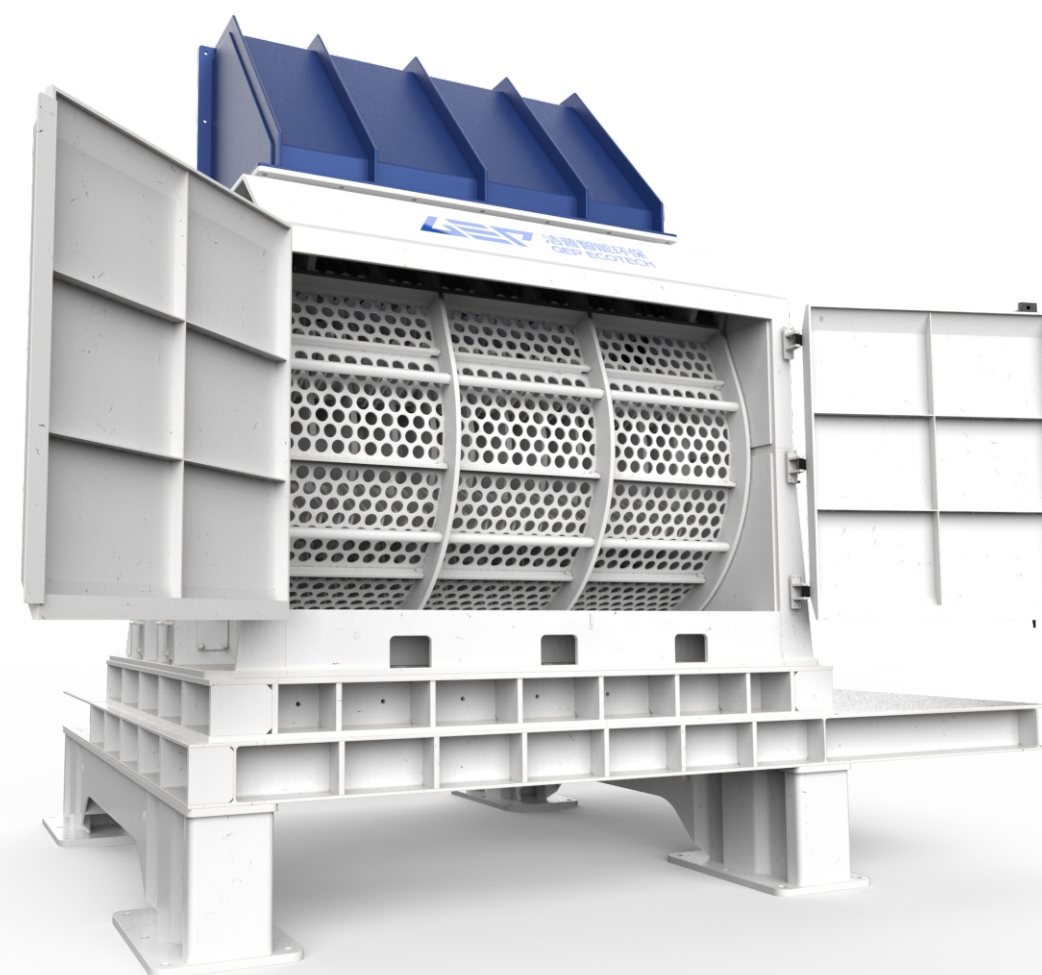
## PRODUCT DESCRIPTION

GXB series biomass fine shredder is a professional equipment tailored for the fine shredding of biomass recycling production line. It realizes significant improvement of shredding efficiency and precise control of material size through innovative technologies such as large diameter rotor, special structure of cutters and large adjustable screen. The equipment has a wide range of applications, covering a variety of scenarios such as agricultural and forestry waste treatment, straw shredding and returning to the field, feed raw material processing, biomass fuel preparation. It can efficiently and finely shred a variety of biomass, such as straw, branches, rushes, fungus sticks, melon seedlings, palm shells, bagasse and other biomass. In terms of performance, its discharge size is usually less than 50mm, and the finest can be up to 10mm after replacing the screen mesh, which can realize small particle size discharge while maintaining the advantages of high output and low energy consumption, showing excellent comprehensive performance.



### » Working principle

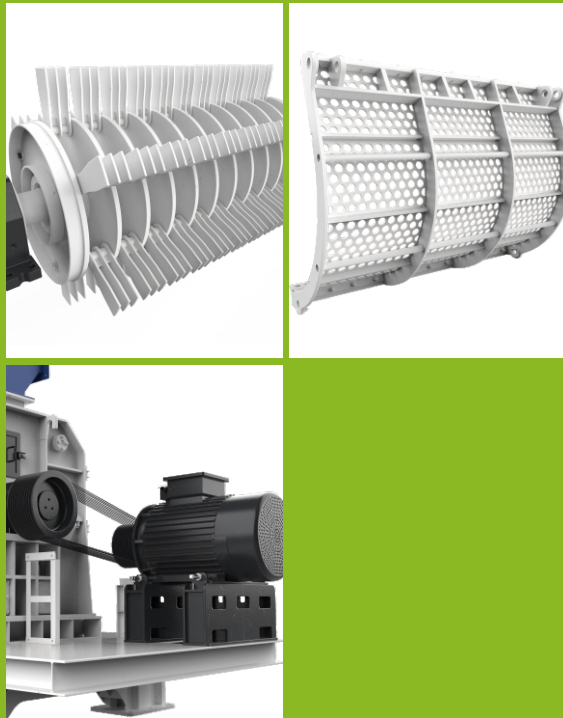
The motor drives the rotor to rotate at a high speed through the V-belt or coupling, which makes the cutter group on the rotor obtain huge kinetic energy, and the materials are gradually shredded and pulverized under the action of cutting and hitting by the cutter group. The rotor is surrounded by a large area screen. Materials with particle size smaller than the screen hole are discharged freely, and those larger than the screen hole continue to be shredded in the cutting chamber until the particle size is qualified.



### » Equipment composition

Drive system, feeding hopper, cutter box assembly, discharge hopper, frame, intelligent control system (optional)

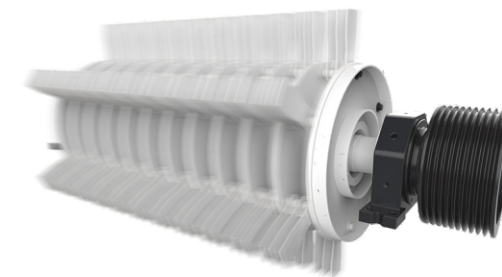
# Product Highlights



01/

## » Large Rotor Diameter Design

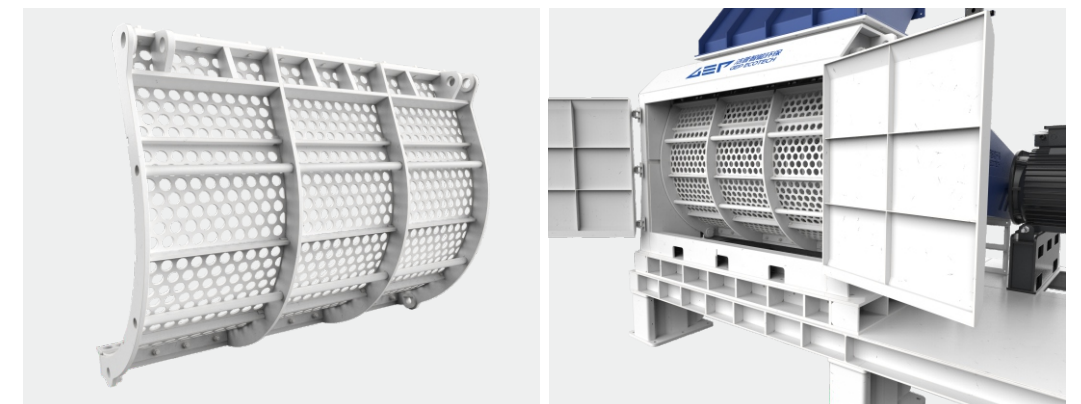
- Increasing the rotor swing diameter substantially increases the rotor linear speed and moment of inertia, resulting in higher shredding efficiency. At the same time, the large rotor diameter can greatly reduce the rotational speed of the main shaft, reduce the bearing heat and extend the bearing life.



02/

## » Large-Area Screen Structure

- The large-area screen covers 2/3 of the circumference of the rotor, with more screen holes, which effectively improves the screening rate of materials. The screen frame adopts special structure, which is easy to adjust the gap between the screen and the blades. When the blades are worn out, the gap value can be kept unchanged by adjusting the screen.

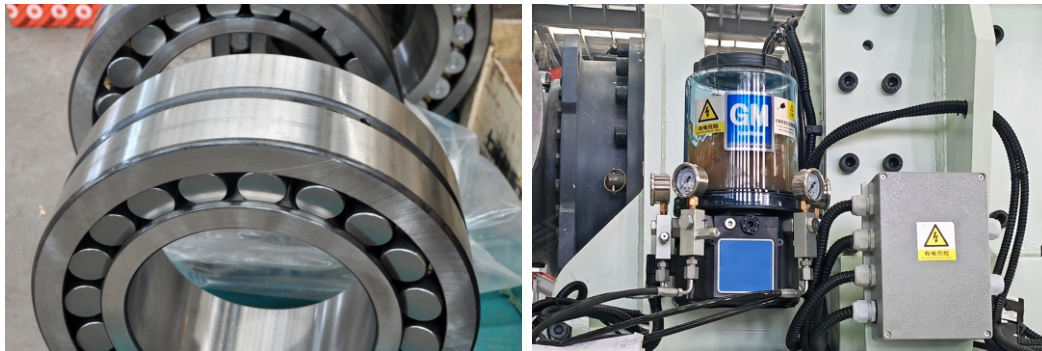




03/

### » High Quality Bearings and Lubrication

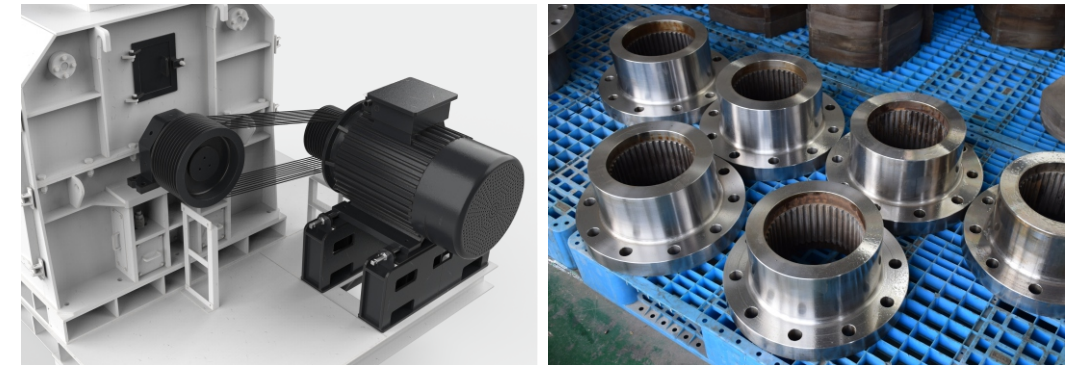
- Adopting imported high-speed double-row spherical roller bearings, which have greater bearing capacity and lower heat generation when rotating at high speed. Meanwhile, it is equipped with thin oil lubrication device, which can lubricate the bearings in real time, reduce the temperature of bearings and extend the life of bearings.



05/

### » Dual Transmission Mode Optional

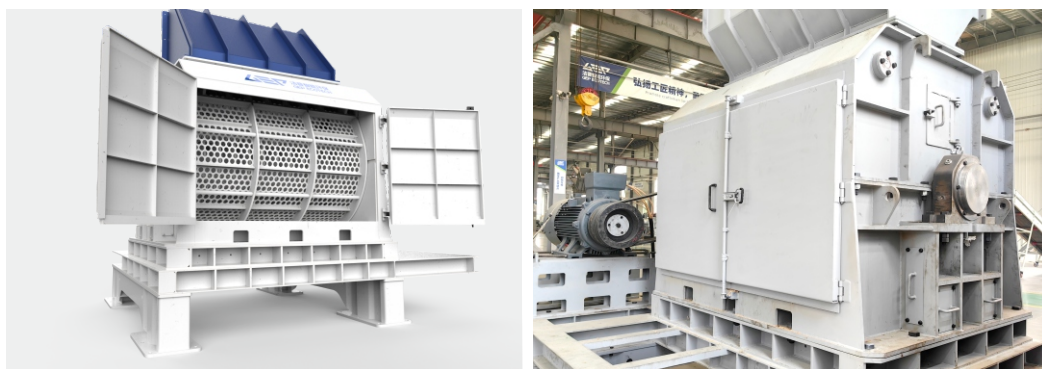
- The transmission mode adopts belt transmission or coupling transmission, which can effectively isolate the impact of vibration of the host on the motor, and protect the motor.



04/

### » Cutter Box Full-Opening Design

- The cutter box adopts full-opening design, which is convenient for quick screen replacement and rotor maintenance, and improves the overhaul efficiency.



## SOFTWARE COPYRIGHT



|  |                                 |
|--|---------------------------------|
| Shredder Monitoring System V1.0                              | Registration No. 2019SR0071791  |
| Shredder Operation Self-Diagnostic System V1.0               | Registration No. 2019SR0071856  |
| Shredder Main Shaft Automatic Cooling Control System V1.0    | Registration No. 2019SR0072440  |
| Shredder Intelligent Monitoring System V1.0                  | Registration No. 2019SR0072287  |
| Shredder Operation and Maintenance Monitoring System V1.0    | Registration No.: 2019SR0067379 |
| Shredder Self-Diagnostic Analysis System V1.0                | Registration No.: 2019SR0067377 |
| Shredding Production Line Intelligent Monitoring System V1.0 | Registration No.: 2019SR0053414 |



# Technical Parameters

| Model | Host Overall Dimensions (mm) | Discharge Size (mm)         | Capacity (t/h) | Installed Power (kW) | Transmission Mode                               | Host Weight (kg) |
|-------|------------------------------|-----------------------------|----------------|----------------------|---|------------------|
| GXB10 | 3500×1800×2000               | <50mm<br>Accounting for 95% | 3.5-7          | 110-132              | Belt Transmission or Coupling Direct Connection | 6800             |
| GXB15 | 4100×1800×2000               |                             | 8-12           | 160-200              |   | 8500             |
| GXB20 | 4990×1960×2190               |                             | 10-16          | 200-355              |   | 11950            |

SHARING THE  
| GREEN TECHNOLOGY |  
共享绿色科技





## DIGITAL GEP ECOTECH

2012

Founded in 2012, GEP Group has taken resource recycling as our mission and is committed to the research and development, production, sales and service of intelligent solid waste shredding equipment and its supplementary equipment, as well as providing professional and customized system solutions for solid waste disposal production lines. With more than ten years of experience, GEP has covered dozens of countries and regions around the world, and has become a major force in the solid waste field.

66000

Our company have an efficient intelligent equipment manufacturing base with a total area of 66,000 square meters, equipped with complete high-precision equipment processing systems such as CNC vertical machining centers, CNC gantry machining centers, CNC lathes, CNC grinders, CNC wire cutting, and an experienced professional technical team. It can achieve the efficient production demand of 400 sets of intelligent environmental protection equipment per year, ensuring timely delivery of various customer orders.

150+

Our company has been awarded National High-Tech Enterprise, Henan Solid Waste Resource Recycling Equipment Engineering Technology Research Center, Henan Province "Professionalization, Refinement, Specialization, Novelty" Small and Medium Enterprise, Henan Province Science and Technology Small and Medium Enterprise, Zhengzhou City Science and Technology Little Giant and other enterprise awards. It has obtained 128 national patents and 39 software copyrights, and has successfully passed the ISO "three systems" certification for quality management, environment management, and occupational health and safety management, as well as the Europe Union CE certification.

70+

Our company has made achievements in eight fields, namely, bulky waste recycling, biomass recycling, industrial waste recycling, construction and demolition waste recycling, waste tires recycling, hazardous waste recycling, food waste recycling and MSW recycling, winning the favor of more than 70 overseas clients and successfully helped customers achieve the recycling of solid waste, showcasing the intelligent manufacturing capability of Chinese environmental protection equipment manufacturing enterprise to the world.

